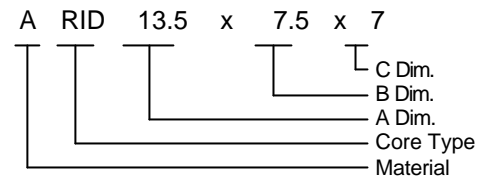


Balun Cores / RID Type

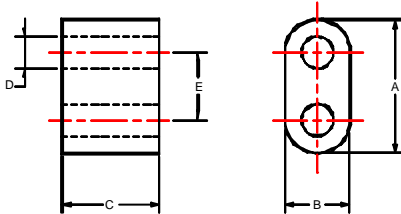


Product Identification

Materials: A, A₃, B, B₂₄₆, D₂, X₁₂₉, Y₄, Y₇

RID cores are used for wideband transformers up to high frequencies and to balance unbalanced transformers.

Shapes and Dimensions



Cores	A	B	C	D	E
RID 4.24 × 2.54 × 3.2	4.24±0.3	2.54±0.2	3.2±0.15	1.0±0.15	2
RID 3.5 × 2 × 2.5	3.5±0.5	2.0±0.2	2.5±0.2	1.0±0.15	2
RID 5 × 3 × 2	5.0±0.2	3.0±0.2	2.0±0.2	1.2±0.15	2.6
RID 5 × 3 × 5	5.0±0.2	3.0±0.2	5.0±0.2	1.2±0.15	2.6
RID 6.4 × 3.5 × 3.2	6.4±0.3	3.5±0.2	3.2±0.2	1.8±0.15	3
RID 6.4 × 3.5 × 5	6.4±0.3	3.5±0.2	5.0±0.3	1.8±0.15	3
RID 7 × 4 × 3	7.0±0.3	4.0±0.2	3.0±0.2	2.0±0.15	3
RID 7 × 4 × 6.5	7.0±0.3	4.0±0.2	6.5±0.2	2.0±0.15	3
RID 13.5 × 7.5 × 4	13.5±0.5	7.5±0.2	4.0±0.3	4.0±0.25	5.5
RID 13.5 × 7.5 × 7	13.5±0.5	7.5±0.2	7.0±0.3	4.0±0.25	5.5
RID 13.5 × 7.5 × 14	13.5±0.5	7.5±0.2	14±0.5	3.8±0.25	5.8
RID 13.5 × 7.5 × 28	13.5±0.5	7.5±0.2	28±0.8	3.8±0.25	5.8