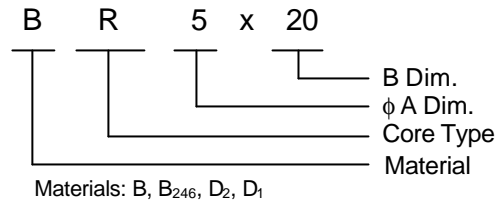


Rod Cores / R Type

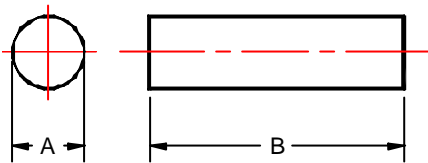


Product Identification



R cores are mainly used as the magnetic cores of the coils which do not require adjustments as well as magnetic shield.

Shapes and Dimensions



Cores	φA Dim (m/m)	fB Dim (m/m)
R 2×4	2±0.2	4±0.3
R 2×8	2±0.2	8±0.3
R 2×10	2±0.2	10±0.3
R 3×8	3±0.2	8±0.3
R 3×10	3±0.2	10±0.3
R 3×12	3±0.2	12±0.3
R 4×10	4±0.2	10±0.3
R 4×12	4±0.2	12±0.3
R 4×15	4±0.2	15±0.4
R 4×19	4±0.2	19±0.4
R 5×15	5±0.2	15±0.4
R 5×20	5±0.2	20±0.5
R 6×15	6±0.2	15±0.4
R 6×20	6±0.2	20±0.5
R 6×25	6±0.2	25±0.5
R 6×30	6±0.2	30±0.5
R 6.34×25.4	6.34±0.2	25.4±0.5
R 8×15	8±0.3	15±0.4
R 8×20	8±0.3	20±0.5
R 8×30	8±0.3	30±0.5
R 10×20	10±0.3	20±0.5
R 10×30	10±0.3	30±0.5