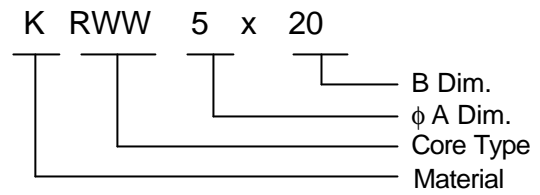


Rod Cores / RWW Type



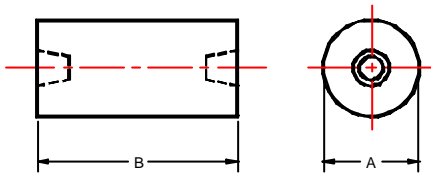
Product Identification



Material: B, B<sub>246</sub>, D<sub>2</sub>, K, X<sub>129</sub>

RWW Cores can be used as peaking coils, choke coils and micro inductors

Shapes



Dimensions

Cores	φ A Dim (m/m)	B Dim (m/m)
RWW 1.5 × 4.5	1.5±0.15	4.5±0.20
RWW 1.7 × 4.5	1.7±0.15	4.5±0.20
RWW 2 × 6	2.0±0.15	6.0±0.20
RWW 2 × 8	2.0±0.15	8.0±0.20
RWW 3 × 6	3.0±0.15	6.0±0.20
RWW 3 × 8	3.0±0.20	8.0±0.20
RWW 3 × 10	3.0±0.15	10±0.20
RWW 3 × 12	3.0±0.15	12±0.30
RWW 4 × 10	4.0±0.15	10±0.30
RWW 4 × 12	4.0±0.15	12±0.30
RWW 4 × 15	4.0±0.15	15±0.30
RWW 5 × 15	5.0±0.15	15±0.30
RWW 5 × 20	5.0±0.15	20±0.50
RWW 5 × 25	5.0±0.15	25±0.50
RWW 6 × 20	6.0±0.15	20±0.50
RWW 6 × 25	6.0±0.15	25±0.50
RWW 6 × 30	6.0±0.15	30±0.80
RWW 10 × 30	10±0.50	30±0.80