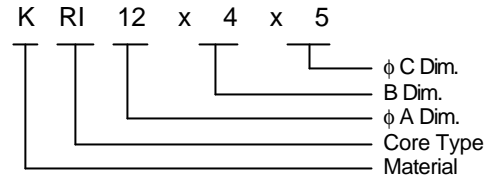


Toroid Cores / RI Type



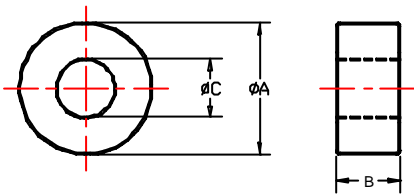
Product Identification



Materials: B B₂₄₆ D₂ K O₁ Y₄ Y₇

The ring configurations of RI type cores provide the utilization of properties of ferrites. In addition, transformer filter inductors, loading coil, and balun transformers are a few of the applications for this type of core.

Shape



Dimensions

Cores	Dimensions (mm)		
	A	B	C
RI 2.8 × 1.2 × 1.7	2.8±0.2	1.2±0.15	1.7±0.15
RI 3.43 × 1.52 × 1.78	3.43±0.2	1.52±0.2	1.78±0.15
RI 4 × 1.5 × 2	4.0±0.2	1.5±0.2	2.0±0.15
RI 4.4 × 1.2 × 2.8	4.4±0.2	1.2±0.15	2.8±0.2
RI 6 × 2 × 3	6.0±0.2	2.0±0.2	3.0±0.2
RI 6 × 2.8 × 3	6.0±0.2	2.8±0.2	3.0±0.2
RI 6 × 3 × 3	6.0±0.2	3.0±0.2	3.0±0.2
RI 8 × 3 × 4	8.0±0.2	3.0±0.2	4.0±0.2
RI 9 × 4 × 5	9.0±0.3	4.0±0.2	5.0±0.2
RI 9.5 × 4.8 × 4.8	9.5±0.3	4.8±0.2	4.8±0.2
RI 10 × 3.7 × 5	10.0±0.3	3.7±0.2	5.0±0.2
RI 10.8 × 5 × 5.5	10.8±0.3	5.0±0.3	5.5±0.2