

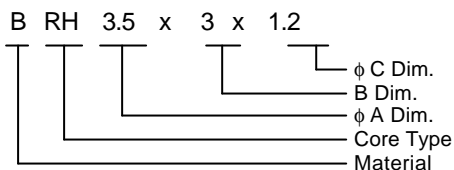
## Bead Cores / RH Type



### Ferrite bead cores

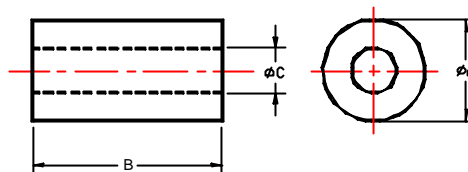
The ferrite bead cores are tubular shaped that could be passed through with different elements' beads or used as inductors by passing through wires. They are used for high frequency choking canceling of parasitical oscillation and noise.

### Product Identification



Material: Y<sub>7</sub>, B, B<sub>246</sub>

### Shapes



- There are various shapes according to wire material and characteristics

### Dimensions and Electrical Characteristics

Cores	Dimensions (mm)			Z (W) Min.	
	A	B	C	25 MHz	100 MHz
RH 9.5 × 4.8 × 4.80	2.5±0.15	1.5±0.10	0.76±0.10	5	20
BRH 2.5 × 3.0 × 0.76	2.5±0.15	3.0±0.51	0.76±0.10	8	25
BRH 2.5 × 4.0 × 0.76	2.5±0.15	4.0±0.15	0.76±0.10	12	32
Y7RH 2.5 × .0 × 0.76	2.5±0.15	7.0±0.20	0.76±0.15	20	58
Y7RH 3.5 × 4.5 × 0.76	3.5±0.20	4.7±0.20	0.76±0.15	18	60
BRH 3.5 × 4.5 × 0.76	3.5±0.20	4.5±0.20	0.76±0.15	20	45
Y7RH 3.5 × 6.0 × 0.76	3.5±0.20	6.0±0.30	0.76±0.15	22	70
BRH 3.5 × 6.0 × 0.76	3.5±0.20	6.0±0.30	0.76±0.15	25	65
Y7RH 3.5 × 7.8 × 0.76	3.5±0.20	7.8±0.30	0.76±0.15	25	100
Y7RH 3.5 × 8.3 × 0.76	3.5±0.20	8.3±0.30	0.76±0.15	30	110
B246RB 3.5 × 9 × 0.76	3.5±0.20	9.0±0.40	0.76±0.15	60	100
Y7RH 3.5 × 9.5 × 0.76	3.5±0.20	9.5±0.40	0.76±0.15	35	110
Y7RH 3.5 × 11.5 × 0.76	3.5±0.20	11.5±0.40	0.76±0.15	45	145
BRH 3.5 × 3.0 × 1.2	3.5±0.20	3.0±0.20	1.20±0.15	8	30
Y7RH 3.5 × 4.5 × 1.2	3.5±0.20	4.5±0.20	1.20±0.15	16	40
BRH 3.5 × 6.0 × 1.2	3.5±0.20	6.0±0.30	1.20±0.15	18	44
Y7RH 3.5 × 14 × 1.2	3.5±0.20	14.0±0.40	1.20±0.15	40	100
BRH 4.1 × 3.2 × 1.6	4.1±0.20	3.2±0.20	1.60±0.15	9	25
BRH 4.1 × 4.0 × 1.6	4.1±0.20	4.0±0.20	1.60±0.15	10	30
BRH 5.0 × 6.0 × 1.2	5.0±0.30	6.0±0.30	1.20±0.15	22	60
BRH 5.0 × 6.0 × 1.5	5.0±0.30	6.0±0.30	1.50±0.15	20	48
BRH 5.0 × 6.0 × 2.4	5.0±0.30	6.0±0.30	2.40±0.15	13	30
BRH 6.5 × 10.0 × 4.3	6.5±0.30	10.0±0.40	4.30±0.20	8	30
BRH 6.6 × 9.5 × 3.2	6.6±0.30	9.5±0.40	3.20±0.20	20	50
BRH 7.6 × 7.5 × 2.4	7.5±0.30	7.5±0.30	2.40±0.15	22	55
BRH 7.6 × 16.0 × 2.8	7.6±0.30	16.0±0.40	2.80±0.15	35	95
BRH 8.0 × 10.0 × 1.0	8.0±0.30	10.0±0.40	1.00±0.15	50	130
BRH 8.0 × 10.0 × 1.5	8.0±0.30	10.0±0.40	1.50±0.15	35	105
BRH 8.0 × 10.0 × 3.5	8.0±0.30	10.0±0.40	3.50±0.20	25	55

- Notes: Impedance to be measured by using HP4286A impedance analyzer, with component mounting ASSY 16092A .