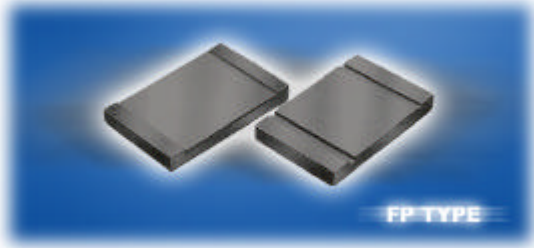
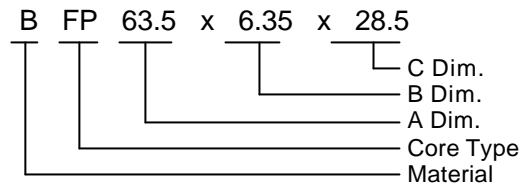


EMI Cores / FP Type

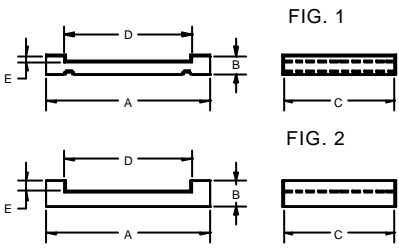


Product Identification



Material: B

Shapes

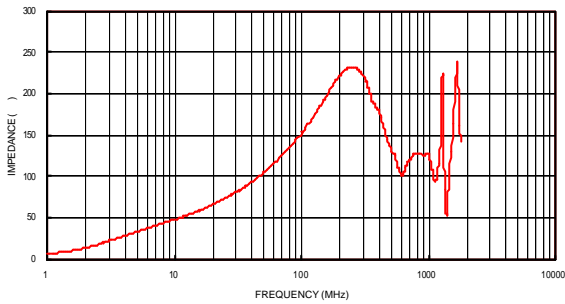


Dimensions and Electrical Characteristics

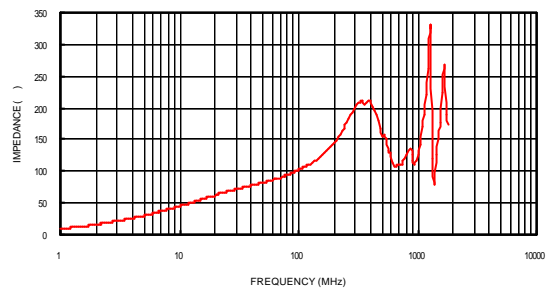
Part Number	Fig	Dimensions (mm)					Typical Impedance (W)	
		A	B	C	D	E	@25 MHz	@100 MHz
BFP 63.5 × 6.35 × 28.5	1	63.5±1.5	6.35±0.5	28.5±0.8	52.1±1.5	0.8±0.2	60	124
BFP 45.1 × 4.5 × 28.6	1	45.1±0.8	4.5±0.5	28.6±0.8	34.4±0.8	0.6±0.2	64	107
BFP 16.5 × 3.5 × 6.3	2	16.5±0.2	3.5±0.15	6.3±0.2	11.5±0.2	1.0±0.15	27	59
BFP 16.5 × 5 × 6.3	2	16.5±0.2	5±0.15	6.3±0.2	11.5±0.2	2.5±0.15	22	53

Curves of FP Cores

BFP 63.5*6.35*28.5



BFP 45.1*4.5*28.5



- Test Meter: HP4286A RF IMPEDANCE ANALYZER
- Test Fixture: HP16092A SPRING CLIP FIXTURE
- Test Wire: 16pin CABLE WIRE (L: 160mm)
- Test Winding: 1/2 Ts