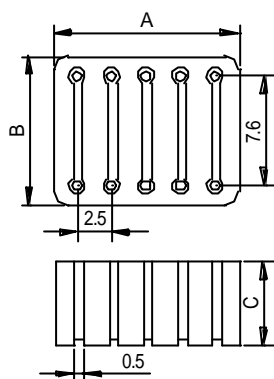


EMI PC Beads



TYPE	A	B	C
BF6H 8.34 × 10.88 × 3.81	8.34±0.25	10.88±0.25	3.81±0.25
BF6H 8.34 × 10.88 × 5.08			5.08±0.25
BF6H 8.34 × 10.88 × 6.35			6.35±0.25
BF6H 8.34 × 10.88 × 7.62			7.62±0.25
BF6H 8.34 × 10.88 × 8.09			8.09±0.25
BF6H 8.34 × 10.88 × 10.15			10.15±0.25
BF8H 10.88 × 10.88 × 3.81	10.88±0.25	10.88±0.25	3.81±0.25
BF8H 10.88 × 10.88 × 5.08			5.08±0.25
BF8H 10.88 × 10.88 × 6.35			6.35±0.25
BF8H 10.88 × 10.88 × 7.62			7.62±0.25
BF8H 10.88 × 10.88 × 8.09			8.09±0.25
BF8H 10.88 × 10.88 × 10.15			10.15±0.25
BF10H 13.42 × 10.88 × 3.81	13.42±0.25	10.88±0.25	3.81±0.25
BF10H 13.42 × 10.88 × 5.08			5.08±0.25
BF10H 13.42 × 10.88 × 6.35			6.35±0.25
BF10H 13.42 × 10.88 × 7.62			7.62±0.25
BF10H 13.42 × 10.88 × 8.09			8.09±0.25
BF10H 13.42 × 10.88 × 10.15			10.15±0.25