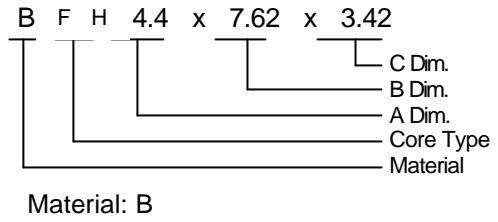


"D" Type Connector Suppressor Elements

Product Identification



Shapes

Figure.1

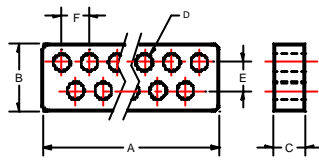
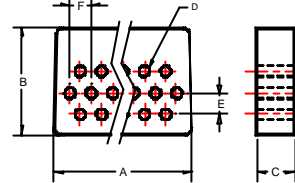


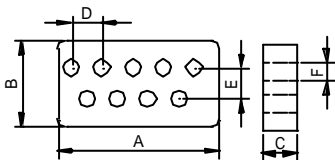
Figure.2



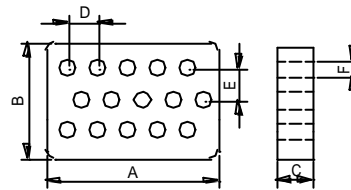
Dimensions and Electrical Characteristics

Part Number	Fig	Dimensions (mm)						Z (W) Min	
		A	B	C	D	E	F	@25 MHz	@100 MHz
BF9H 14.4 × 7.62 × 3.15	1	14.25/14.55	7.49/7.75	3.00/3.25	1.35/1.65	3.20	2.80	25	40
BF15H 22.85 × 7.7 × 3.15	1	22.65/23.05	7.50/7.90	3.00/3.25	1.35/1.65	2.70	2.80	25	40
BF25H 36.32 × 7.62 × 3.15	1	35.94/36.70	7.49/7.75	3.10/3.20	1.35/1.65	2.85	2.77	25	40
BF15H 15 × 12.7 × 1.9	2	14.80/15.20	12.50/12.90	1.80/2.00	0.71/1.01	2.54	2.29	25	40

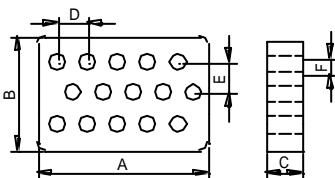
- Measurements are done on a 1" length of #22 AWG TCW between the probe terminals of a Hewlett-Packard 4193A Impedance Analyzer.
- TEST WIRE 0.65φ T.C.W × 25mm, 1/2 Ts.
- Z values are for inner holes.



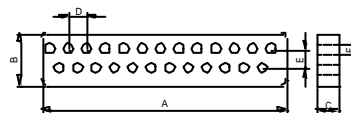
BF9H 14.4 ' 7.62 ' 3.15		
A	14.25~14.55	m/m
B	7.49~7.75	m/m
C	3.0~3.25	m/m
D	1.5±0.15	m/m
E	3.2REF	m/m
F	2.8REF	m/m



BF15H 15x12.7x1.9		
A	15±0.2	m/m
B	12.7±0.2	m/m
C	1.9±0.1	m/m
D	0.86±0.15	m/m
E	2.54 REF	m/m
F	2.29 REF	m/m



BF15H 22.85 ' 7.7 ' 3.15		
A	22.65~23.05	m/m
B	7.50~7.75	m/m
C	3.0~3.25	m/m
D	1.5±0.15	m/m
E	2.7REF	m/m
F	2.80 REF	m/m



BF25H 36.32x7.62x3.15		
A	35.94~36.7	m/m
B	7.49~7.75	m/m
C	3.1~3.2	m/m
D	1.5±0.15	m/m
E	2.85REF	m/m
F	2.77REF	m/m