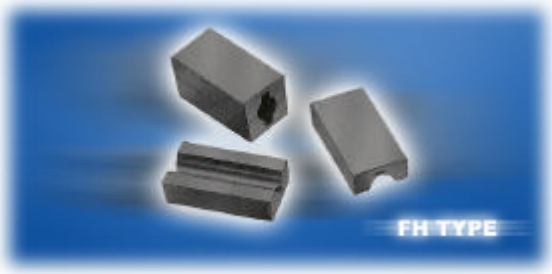
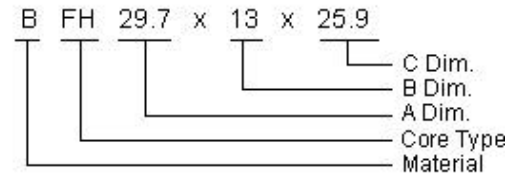


EMI Cores / FH Type

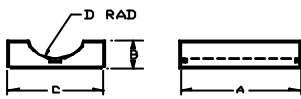


Product Identification



Material: B

Shapes

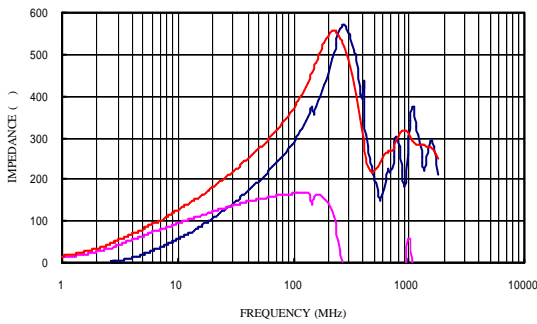


Dimensions and Electrical Characteristics

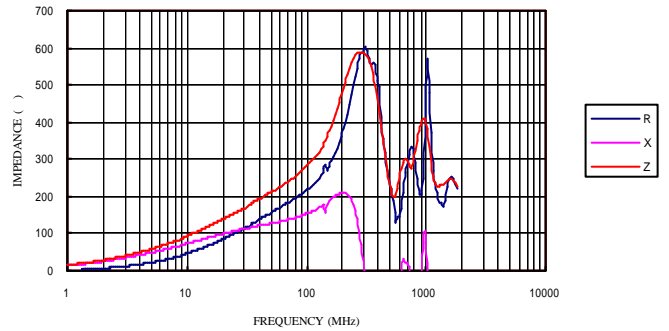
| Cores | Dimensions (mm) | | | | Typical Impedance (OHM) | | Remark |
|----------------------|-----------------|----------|----------|----------|-------------------------|---------|--------|
| | A | B | C | D | 25 MHz | 100 MHz | |
| BFH 28.5 × 7.5 × 15 | 28.5±0.5 | 7.50±0.3 | 15.0±0.7 | 3.3±0.15 | 190 | 280 | LF65 |
| BFH 30 × 9.4 × 18.7 | 30.0±0.75 | 9.40±0.3 | 18.7±0.7 | 5.0±0.15 | 130 | 272 | LF100 |
| BFH 29.7 × 13 × 25.9 | 29.7±0.75 | 13.0±0.3 | 25.9±0.7 | 6.5±0.15 | 150 | 270 | LF130 |

Curves of FH Cores

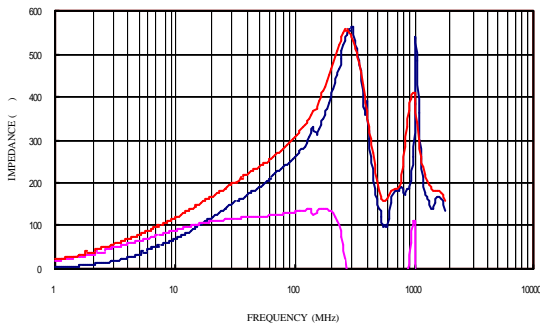
BFH 28.5*7.5*15



BFH 30*9.4*18.7



BFH 29.7*13*25.9

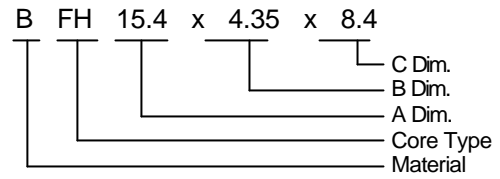


- Test Meter: HP4286A RF IMPEDANCE ANALYZER
- Test Fixture: HP16092A SPRING CLIP FIXTURE
- Test Wire: 0.8φ CABLE WIRE (L: 220mm)
- Test Winding: 1/2 Ts

EMI Cores / FH Type



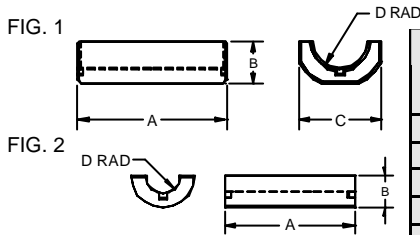
Product Identification



Material: B

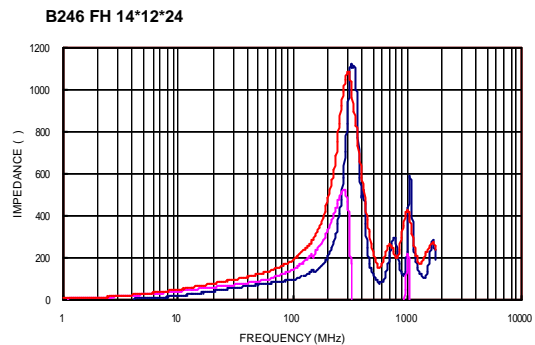
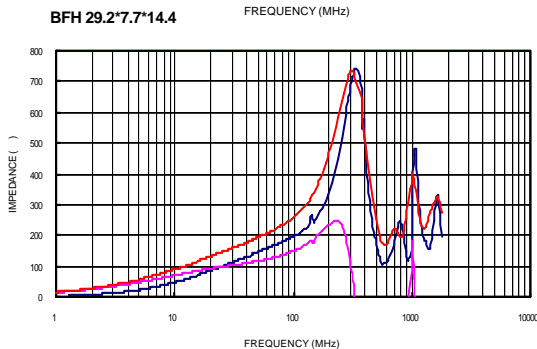
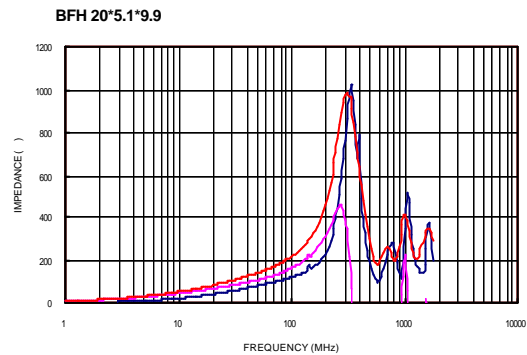
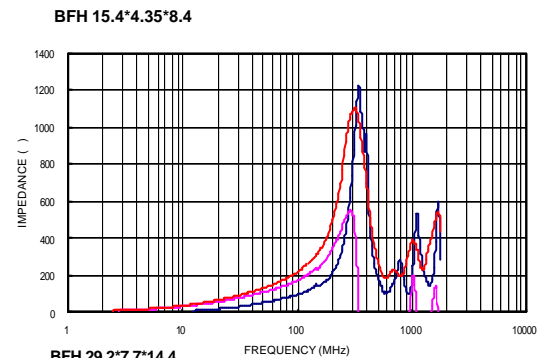
Shapes

Dimensions and Electrical Characteristics



| Fig | Cores | Dimensions (mm) | | | | Z (W) Min | | Remark |
|-----|------------------------|-----------------|-----------|----------|-----------|-----------|---------|--------|
| | | A | B | C | D | 25 MHz | 100 MHz | |
| 1 | BFH 15.4 × 4.35 × 8.4 | 15.4±0.5 | 4.35±0.3 | 8.4±0.4 | 1.9±0.15 | 64 | 160 | LF 35 |
| 1 | BFH 20 × 5.1 × 9.9 | 20±0.6 | 5.1±0.3 | 9.9±0.4 | 2.65±0.15 | 64 | 160 | LF 50 |
| 1 | BFH 24.4 × 6.3 × 12.4 | 24.4±0.3 | 6.3±0.25 | 12.4±0.5 | 3.15±0.15 | 100 | 175 | LF 60 |
| 1 | BFH 29.2 × 7.7 × 14.4 | 29.2±0.4 | 7.7±0.25 | 14.4±0.5 | 3.8±0.15 | 100 | 190 | LF 75 |
| 1 | BFH 33.3 × 8.25 × 16.4 | 33.3±0.4 | 8.25±0.25 | 16.4±0.5 | 4.65±0.15 | 105 | 190 | LF 90 |
| 2 | B246 FH 14 × 12 × 24 | 14±0.5 | 12±0.4 | 24±0.5 | 5.7±0.3 | -- | 320 | - |

Curves of FH Cores



- Test Meter: HP4286A RF IMPEDANCE ANALYZER
- Test Fixture: HP16092A SPRING CLIP FIXTURE
- Test Wire: 0.8φ CABLE WIRE (L: 220mm)
- Test Winding: 1/2 Ts