

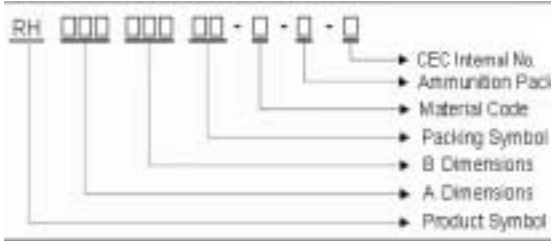
RH Series



Chilisin's EMI / RFI filters are useful for suppressing noise mainly of low impedance circuits. They can effectively absorb any given spectrum of noise by selecting the appropriate ferrite material.

These filters are comparatively cost effective and are easy to install. They could attenuate the unwanted noise & EMI without degradation of the informative signal.

Product Identification



Features

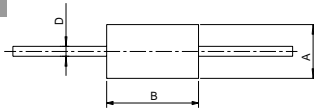
- These filters suppress voltage & current spikes within the circuits and provide protection to semiconductor devices.
- These filters can be mounted directly onto the leads of components utilizing no additional space.
- When these products are placed in series with diodes, they more effectively suppress transient current changes which cause noise than other methods.
- Best designed and tested to offer perfect space utilization and accurate impedance.

Applications

- Prevention of high frequency EMI from Video and acoustic communication units as well as other electronic devices.

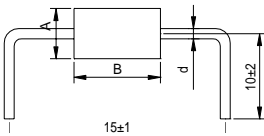
Shapes and Dimensions

Axial



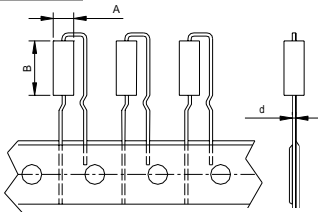
□: Bulk: S Reel / Ammo: ST

Radial Transversal

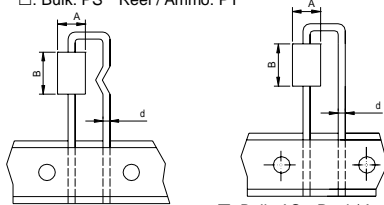


□: Bulk: S

Radial Erection

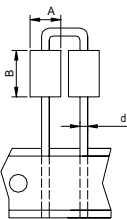


□: Bulk: PS Reel / Ammo: PT



□: Bulk: AS Reel / Ammo: AT □: Bulk: AS Reel / Ammo: B1T

Radial Pair



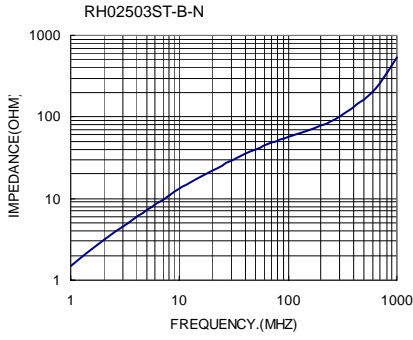
□: Bulk: B2 Reel / Ammo: B2T

Dimensions & Electrical Characteristics

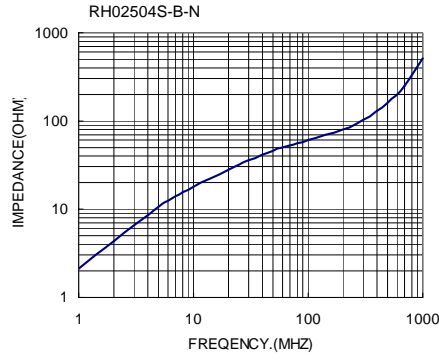
Category	Remark	Dimensions (mm)				Impedance () Min			
		Part No.	A	B	d	10 MHz	100 MHz		
Axial	□: S, ST ▽: A, B	RH025015 □-B-▽-N	2.5±0.15	1.5±0.15	0.65	5.0	10.0		
		RH02503 □-B-▽-N		3.0±2.0		8.0	25.0		
		RH02504 □-B-▽-N		4.0±0.2		12.0	30.0		
		RH02507 □-Y7-▽-N		7.0±0.3		20.0	60.0		
		RH03503 □-B246-N	3.5±0.2	3.0±0.2	0.65	13.0	35.0		
		RH03503 □-B-N		3.0±0.2		13.0	35.0		
		RH035045 □-B-N		4.5±0.2		20.0	45.0		
		RH035047 □-Y7-N		4.7±0.2		20.0	60.0		
		RH03505 □-B-N		5.0±0.2		20.0	50.0		
		RH03506 □-Y7-N		6.0±0.2		20.0	80.0		
		RH03506 □-B-N		6.0±0.2		25.0	65.0		
		RH035078 □-Y7-N		7.8±0.3		28.0	90.0		
		RH035078 □-B-N		7.8±0.3		30.0	85.0		
		RH03583 □-Y7-N		8.3±0.3		30.0	100.0		
		RH03509 □-B246-N		9.0±0.4		60.0	100.0		
		RH03509 □-B-N		9.0±0.4		50.0	80.0		
		RH035115 □-Y7-N		11.5±0.5		45.0	145.0		
		RH03514 □-B-N		14.0±0.5		60.0	100.0		
		RH08010 □-B-N		8.0±0.3		10.0±0.4	0.80	50.0	130.0
		Radial Transversal				RH035045 B-B-N	3.5±0.2	4.5±0.2	0.65
RH03506 B-B-N	6.0±0.3		20.0		65.0				
RH03509 B-B246-N	9.0±0.4		60.0		100.0				
Radial Erection	□: PS AS B1, PT AT B1T	RH035045 □-B-N	3.5±0.2	4.5±0.2	0.65	20.0	45.0		
		RH03506 □-B-N		6.0±0.3		25.0	65.0		
Radial Pair	□: B2, B2T	RH035045 □-B-N	3.5±0.2	4.5±0.2	0.65	20.0	80.0		
		RH03506 □-Y7-N		6.0±0.3		25.0	110.0		

- Note: lead-free

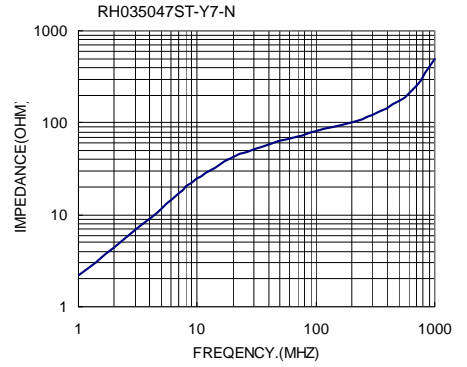
Impedance VS Frequency Characteristics



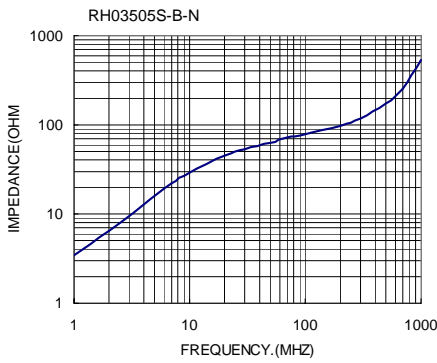
Test Meter: HP4287A
 Test Fixture: HP16092
 Test Wire: 0.65 T.C.W.*63mm
 Test Winding: 1/2Ts.



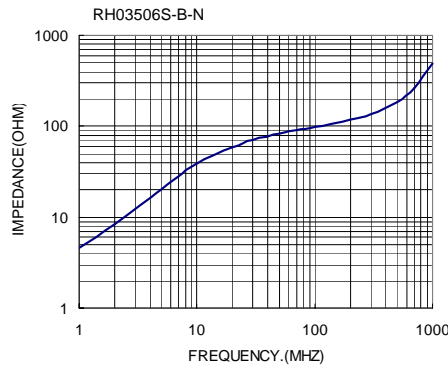
Test Meter: HP4287A
 Test Fixture: HP16092A
 Test Wire: 0.65 T.C.W.*63mm
 Test Winding: 1/2Ts.



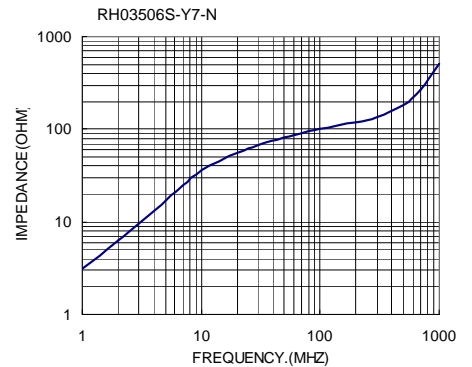
Test Meter: HP4287A
 Test Fixture: HP16092A
 Test Wire: 0.65 T.C.W.*63mm
 Test Winding: 1/2Ts.



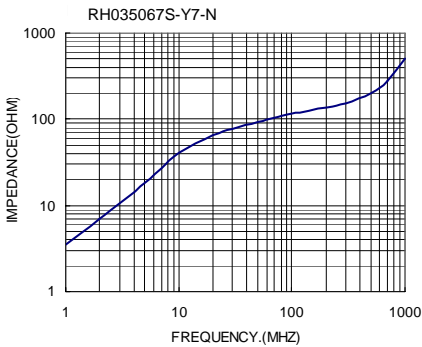
Test Meter: HP4287A
 Test Fixture: HP16092
 Test Wire: 0.65 T.C.W.*63mm
 Test Winding: 1/2Ts.



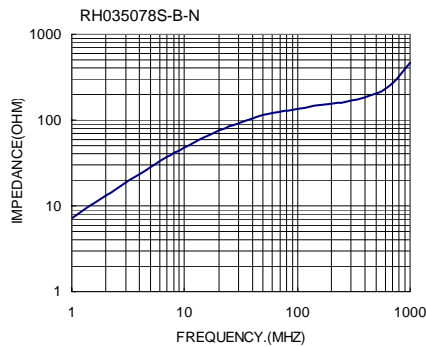
Test Meter: HP4287A
 Test Fixture: HP16092A
 Test Wire: 0.65 T.C.W.*63mm
 Test Winding: 1/2Ts.



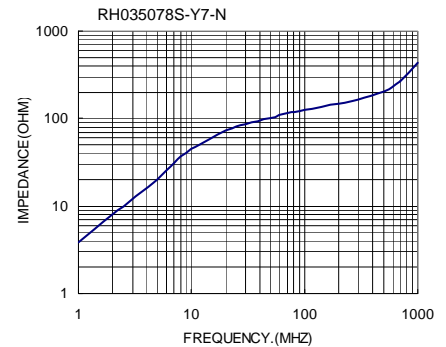
Test Meter: HP4287A
 Test Fixture: HP16092
 Test Wire: 0.65 T.C.W.*63mm
 Test Winding: 1/2Ts.



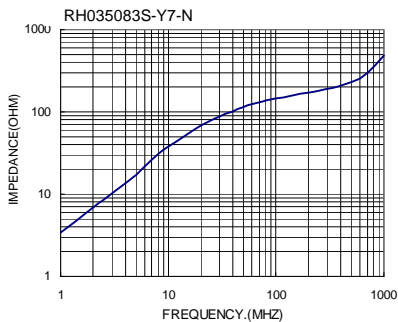
Test Meter: HP4287A
 Test Fixture: HP16092A
 Test Wire: 0.65 T.C.W.*63mm
 Test Winding: 1/2Ts.



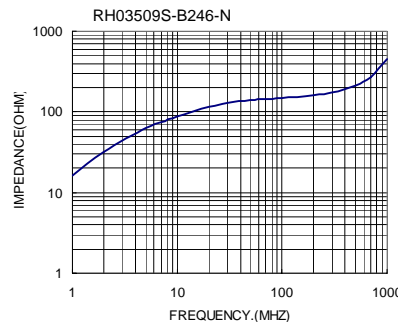
Test Meter: HP4287A
 Test Fixture: HP16092
 Test Wire: 0.65 T.C.W.*63mm
 Test Winding: 1/2Ts.



Test Meter: HP4287A
 Test Fixture: HP16092A
 Test Wire: 0.65 T.C.W.*63mm
 Test Winding: 1/2Ts.



Test Meter: HP4287A
 Test Fixture: HP16092



Test Meter: HP4287A

Leaded EMI Ferrite Beads – RH Series

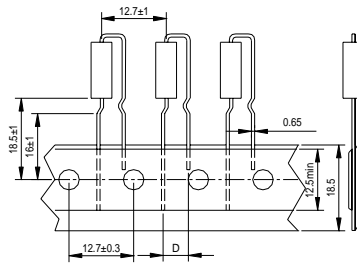
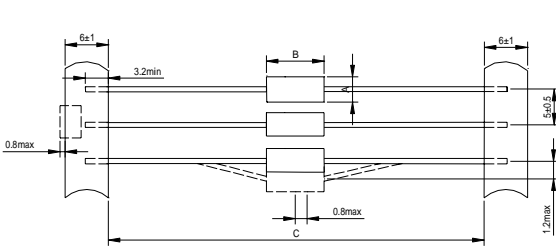
Test Wire:0.65 T.C.W.*63mm
Test Winding: 1/2Ts.

Test Fixture: HP16092A
Test Wire:0.65 T.C.W.*63mm
Test Winding: 1/2Ts.

Leaded EMI Ferrite Beads - RH Series

Packaging Specifications

Packaging Dimensions



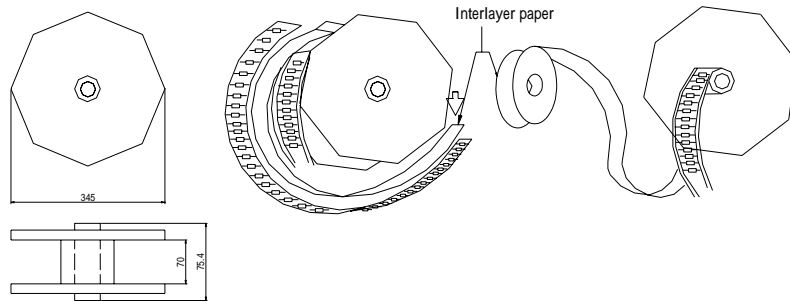
Dimensions in mm

	Tape	Bulk
C	26.5 ^{+1.0} _{-0.5} 52.4±1.5	63±3

Dimensions in mm

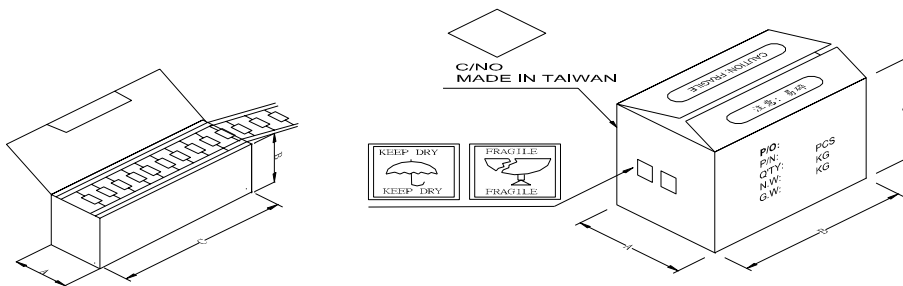
Lead Spacing	Packing Style	Tape	Bulk
D	Erection Pair	4.8~ 5.8	6.35±1 5±1

Reel Packaging



Unit: mm

Ammo-Packaging



Size of Packaging

	Carton dimensions in mm (H*W*H)	Quantity (Pcs)
Reel	350*430*340	20,000
Ammon	260*260*224	25,000
	380*415*385	25,000
Bulk	150*75*85	30,000