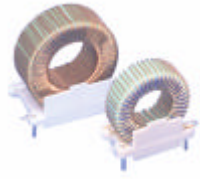


BCB Series



These power inductors are designed primarily for use as output chokes in switching power supplies.

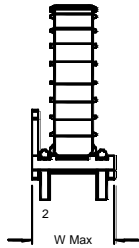
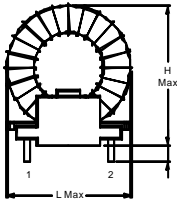
They feature small size and low cost. The toroid core design offers the most inductance in the smallest part size, while minimizing external magnetic fields.

These parts are suited for any application requiring a high DC current bias. The inductance values listed are for parts when tested at low (10 gauss) levels of AC excitation. The parts are very well suited for use at higher levels of AC excitation and will exhibit higher inductance.

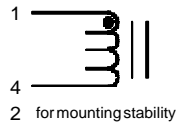
Features

- All insulating materials 130
- Industry standard footprint.
- UL 1446 approved Insulation System available.
- All Plastic material UL94V-0.

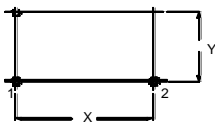
Shapes



Schematic



Footprint



Part Number	Inductance (mH) Min	Current Rating (Amps)	RDC Max (W)	Dimensions (inch/ mm)					Lead Diameter Nom.	
				H Max	L Max	W Max	X ±.01/0.25	Y ±.01/0.25		
BCB3318IR										
BCB3318IR-181-N	180	1.5	0.29	1.10/27.9	1.3/33.0	0.7/17.8	0.80/20.3	0.40/10.2	0.54/1.37	
BCB3318IR-840-N	84	2.4	0.14	1.10/27.9	1.3/33.0	0.7/17.8	0.80/20.3	0.40/10.2	0.54/1.37	
BCB3318IR-430-N	43	3.8	0.07	1.10/27.9	1.3/33.0	0.7/17.8	0.80/20.3	0.40/10.2	0.54/1.37	
BCB3318IR-260-N	26	5.1	0.04	1.10/27.9	1.3/33.0	0.7/17.8	0.80/20.3	0.40/10.2	0.54/1.37	
BCB3318IR-160-N	16	6.7	0.02	1.10/27.9	1.3/33.0	0.7/17.8	0.80/20.3	0.40/10.2	0.54/1.37	
BCB3318IR-070-N	7	10.0	0.01	1.10/27.9	1.3/33.0	0.7/17.8	0.80/20.3	0.40/10.2	0.54/1.37	
BCB3623IR										
BCB3623IR-571-N	567	1.5	0.56	1.40/35.6	1.4/35.6	0.9/22.9	0.90/22.8	0.60/15.2	0.54/1.37	
BCB3623IR-271-N	273	2.4	0.26	1.40/35.6	1.4/35.6	0.9/22.9	0.90/22.8	0.60/15.2	0.54/1.37	
BCB3623IR-151-N	149	3.8	0.13	1.40/35.6	1.4/35.6	0.9/22.9	0.90/22.8	0.60/15.2	0.54/1.37	
BCB3623IR-790-N	79	6.0	0.07	1.40/35.6	1.4/35.6	0.9/22.9	0.90/22.8	0.60/15.2	0.54/1.37	
BCB3623IR-470-N	47	8.2	0.04	1.40/35.6	1.4/35.6	0.9/22.9	0.90/22.8	0.60/15.2	0.54/1.37	
BCB3623IR-260-N	26	11.0	0.02	1.40/35.6	1.4/35.6	0.9/22.9	0.90/22.8	0.60/15.2	0.54/1.37	
BCB4123IR										
BCB4123IR-801-N	796	1.5	0.79	1.6/40.6	1.6/40.6	0.9/22.9	0.9/22.8	0.6/15.2	0.54/1.37	
BCB4123IR-381-N	380	2.4	0.38	1.6/40.6	1.6/40.6	0.9/22.9	0.9/22.8	0.6/15.2	0.54/1.37	
BCB4123IR-201-N	200	3.8	0.19	1.6/40.6	1.6/40.6	0.9/22.9	0.9/22.8	0.6/15.2	0.54/1.37	
BCB4123IR-131-N	134	4.8	0.10	1.6/40.6	1.6/40.6	0.9/22.9	0.9/22.8	0.6/15.2	0.54/1.37	
BCB4323IR										
BCB4323IR-800-N	80	6.3	0.05	1.75/44.5	1.7/43.2	0.9/22.9	0.9/22.8	0.6/15.2	0.54/1.37	
BCB4323IR-490-N	49	8.0	0.03	1.6/40.6	1.6/40.6	0.9/22.9	0.9/22.8	0.6/15.2	0.54/1.37	
BCB4323IR-200-N	20	12.0	0.02	1.7/43.2	1.6/40.6	0.9/22.9	0.9/22.8	0.6/15.2	0.54/1.37	
BCB4824IR										
BCB4824IR-142-N	1439	1.5	1.18	1.9/48.3	1.9/48.3	0.95/24.1	1.2/30.5	0.7/17.8	0.054/1.37	
BCB4824IR-691-N	695	2.4	0.55	1.9/48.3	1.9/48.3	0.95/24.1	1.2/30.5	0.7/17.8	0.054/1.37	
BCB4824IR-401-N	402	3.7	0.28	1.9/48.3	1.9/48.3	0.95/24.1	1.2/30.5	0.7/17.8	0.054/1.37	
BCB4824IR-261-N	257	4.9	0.15	1.9/48.3	1.9/48.3	0.95/24.1	1.2/30.5	0.7/17.8	0.054/1.37	
BCB4824IR-141-N	138	6.0	0.07	1.9/48.3	1.9/48.3	0.95/24.1	1.2/30.5	0.7/17.8	0.054/1.37	
BCB4824IR-770-N	77	8.0	0.04	1.9/48.3	1.9/48.3	0.95/24.1	1.2/30.5	0.7/17.8	0.054/1.37	
BCB5124IR										
BCB5124IR-350-N	35	12.0	0.02	2.0/50.8	2.0/50.8	0.95/24.1	1.2/30.5	0.7/17.8	0.054/1.37	

- Note: lead-free
- Customized specifications are welcome.